

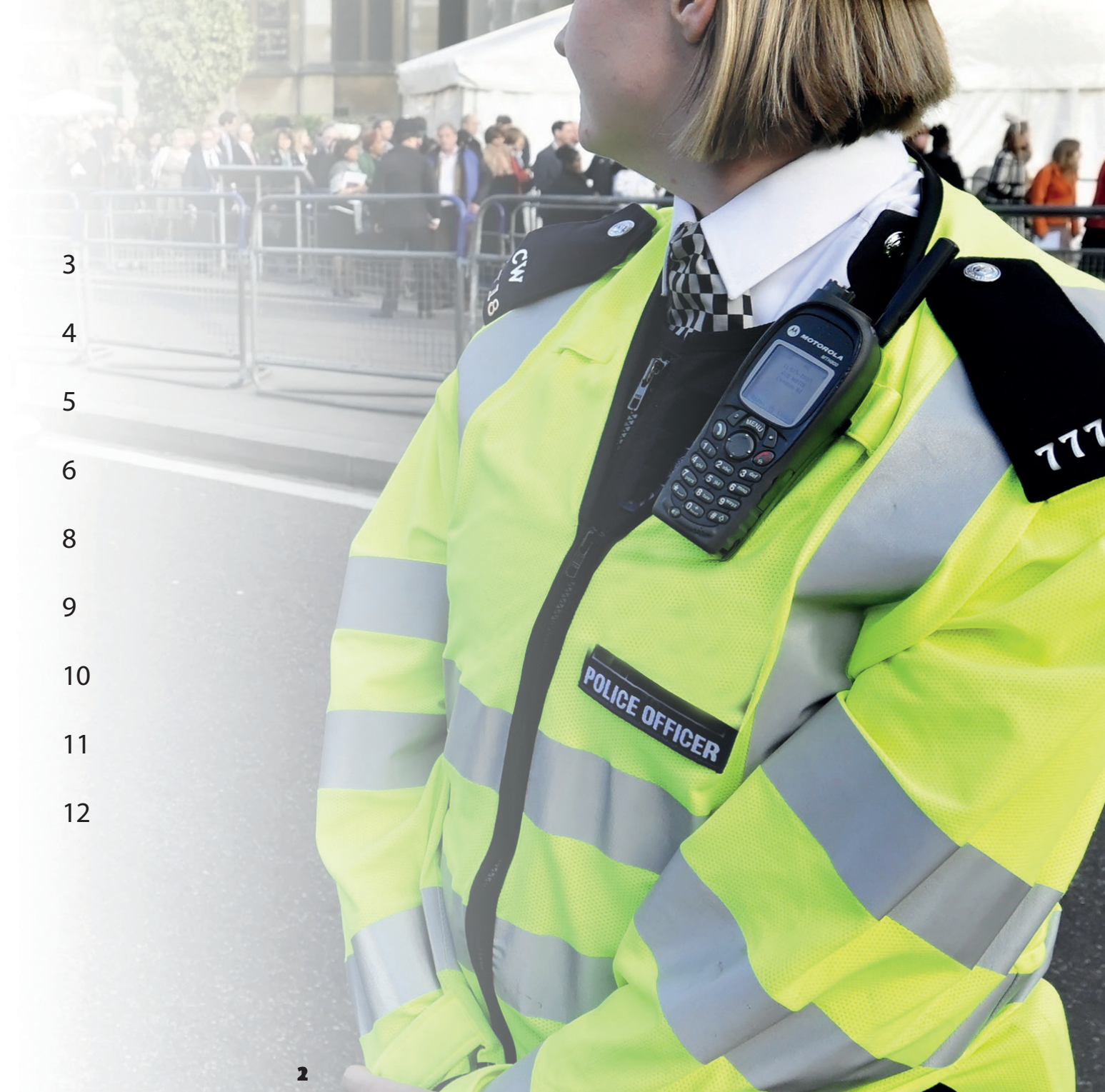
**Gateshead Community
Safety Board**

**PARTNERSHIP PLAN
2016/17**

Working in partnership to make Gateshead a safer place to work, live and visit.

Contents

Foreword	3
Community Safety Activity	4
Introduction	5
Context	6
Strategic Themes & Priorities	8
Consultation Responses	9
CSB Partnership Plan	10
Facts & Figures	11
Contacts	12



Foreword

I am proud to report that Gateshead continues to be a safe place to work, live and visit. The latest Strategic Assessment shows that crime and disorder issues experienced within Gateshead remain significantly lower than the Northumbria average.

Overall, there has been a reduction in the number of crimes recorded in Gateshead by Northumbria Police in the last decade; while perceptions of crime and disorder within the Borough continues to be positive – with a high proportion of respondents to the Safer Communities Survey feeling very or fairly satisfied that the local Police and Council are tackling the key issues that matter within their neighbourhood. This is very encouraging.

Despite this excellent progress, Gateshead Community Safety Board – the multi-agency partnership responsible for reducing crime and disorder, substance misuse and re-offending within your Borough – acknowledges that more can be done.

The Partnership Plan 2016/17 explains how, by working in partnership, we will: tackle crime and disorder, address anti-social behaviour, deal with substance misuse, work to protect young people and families and reduce re-offending in order to build a more reassured and cohesive community.

The Plan identifies a number of priorities for action (based upon the findings of the latest Strategic Assessment) and sets out our shared priorities, what we are going to do, which crime reduction initiatives we are planning - as well as how we intend to measure our progress.

We recognise that we can only achieve our vision with your help. With your involvement, we will be more able to protect you and your property and make your neighbourhood an even safer place. As a result, over the next twelve-months, you can be assured that will be in regular contact with many residents, businesses and other involved agencies – and are fully committed to informing and consulting with you about the key community safety issues that impact on your neighbourhood.

Through the strong multi-agency working that exists within Gateshead, the Board will continue to promote and encourage community cohesion – and I am confident that by delivering the priorities outlined within this Plan, we will be able to bring neighbourhoods and communities together making Gateshead stronger and safer.

By combining appropriate enforcement action with preventative and educational work, I am certain that as a partnership we can continue to proactively drive down crime and disorder issues – and ultimately improve quality of life for all local residents, businesses and visitors.

Finally, I would like to acknowledge all of the hard work and efforts of partner agencies and internal Council services who, on a daily basis, contribute significantly to protecting and supporting Gateshead residents - and I look forward to replicating further successes over the next 12 months.



Cllr. Gary Haley
Chair of Gateshead Community Safety Board
and Northumbria Police and Crime Panel

Introduction

What is Community Safety?

Community safety involves various organisations working together with local communities to tackle persistent crime and disorder issues that have the potential to adversely affect the quality of life of local people within the Borough. From feeling secure in your home to feeling confident while out in your local neighbourhood, community safety continues to be one of the most important issues for residents living in Gateshead.

We are pleased to report that Gateshead continues to be one of the safest places to live, work and visit throughout the whole of Tyne and Wear. When compared to its Most Similar Family Groups across England and Wales, the Borough remains the best performing in relation to the vast majority of crime and disorder indicators.

Despite this success, in the last 12 months, Gateshead has started to experience a rise in the number of crimes reported to Northumbria Police. Although this increase is likely due to national changes in the way in which crime is now recorded by Police Forces, you can be assured that partner agencies are fully committed to tackling the community safety issues facing the Borough – and you can be confident that agencies will continue to take timely and effective action to address these issues and at the earliest possible opportunity.

Our Vision

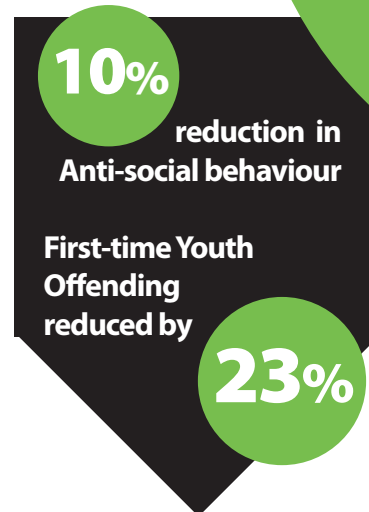
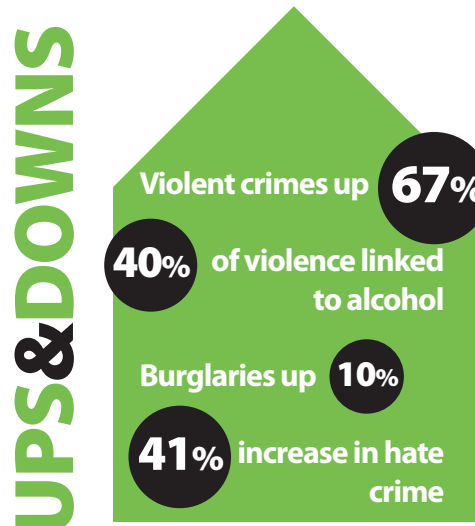
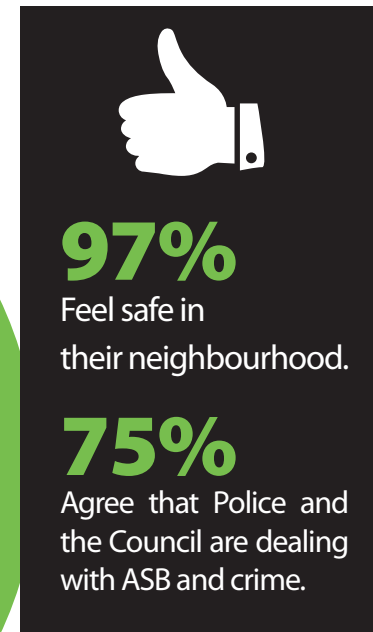
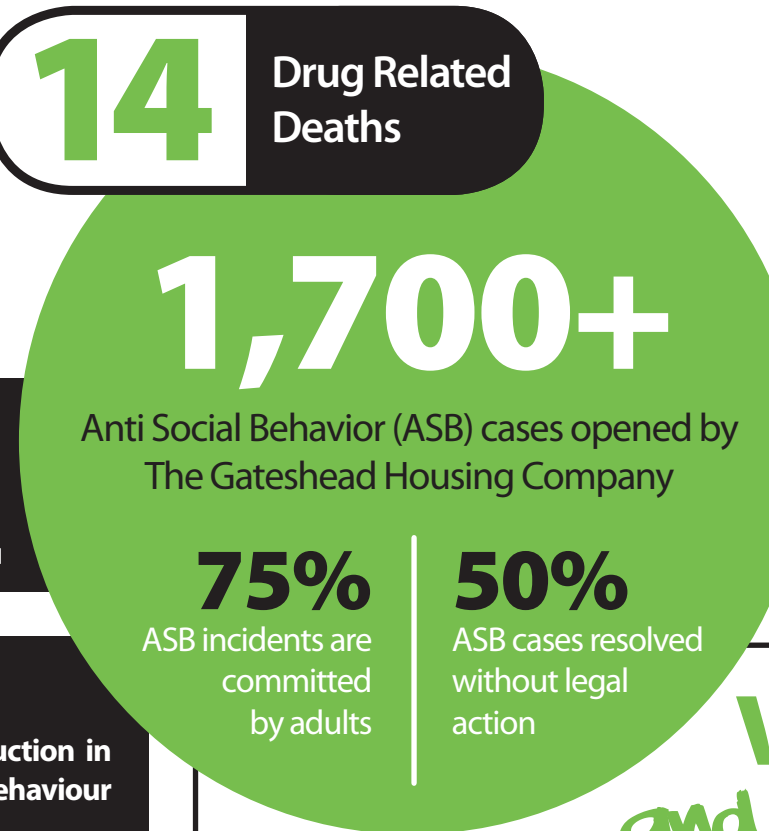
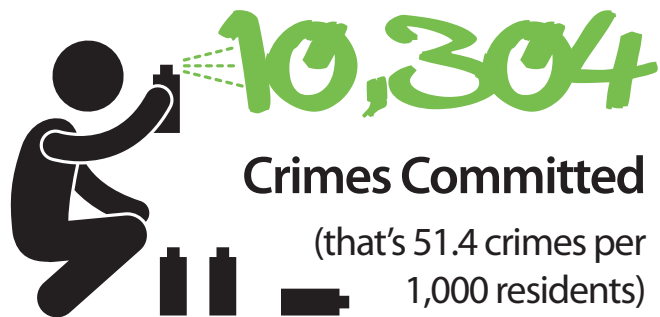
The vision of the Gateshead Community Safety Board is for:

“Gateshead to remain a safe place to work, live and visit”



Community Safety in Gateshead - Facts & Figures:

Findings from Strategic Assessment (Sep 14 - Oct 15)



Community Safety Activity in 2015/16

Operation Forager / Sentinel

A dedicated operation designed to address burglary dwelling problems in Gateshead – resulted in significant reductions in the volume of offences reported.

Supporting Vulnerable Adults

Implementation of the first Multi-Agency Safeguarding Hub (MASH) to support vulnerable adults with multiple and complex needs.

Operation Encompass

Roll out of Operation Encompass to share information between Police and local schools to support young people adversely affected by domestic abuse.

Domestic Abuse Champions

Gateshead CSB has continued to train Domestic Abuse Champions across a range of Council services and partner agencies to raise profile of support available.

Supporting ASB Victims

Commissioned an ASB Volunteer Scheme to provide help, guidance and support to victims of Anti-Social Behaviour and Hate Crime within Gateshead.

Serial Victims of Domestic Abuse

Established a Serial Victims Pilot to identify, support and address needs of individuals who have suffered domestic abuse from multiple partners.

Drug Deaths and Suicides

Broadened remit of Drug-related Death Panel to review all suicides to identify lessons learnt and improve support available for local residents.

Safer Communities Survey

Commissioned the SCS (Safer Communities Survey) to identify and act on perceptions of crime and disorder issues raised by local Gateshead residents.

Troubled Families Programme

Continue to implement Phase 2 of the Families Gateshead Programme in order to help identified Troubled Families to successfully turn their lives around.

Preventing Violent Extremism

Continued to work in partnership with partners and communities to reduce the impact of community tensions and to raise profile of Preventing Extremism.

Task and Finish Groups

Set-up Task and Finish Groups to tackle a range of issues affecting local residents (inc. motorcycle disorder, youth-related ASB, graffiti and community tensions).

Domestic Homicide Reviews

Commissioned several Domestic Homicide Reviews (DHRs) to review local practice to ensure robust and effective processes to safeguard local residents.

Domestic Abuse Perpetrators

Supported the launch of the Multi-Agency Tasking and Co-ordination (MATAC) initiative within Gateshead designed to target serial perpetrators of domestic abuse.

ASB Tools and Powers

Implementation of the new ASB Tools and Powers (including the roll out of a number of Public Space Protection Orders across the Borough) and Problem Solving Training.

Consultation and Engagement

A broad range of consultation and engagement work has been undertaken with local residents and community groups in the last twelve-months.

High Risk DV Clients

The Independent Domestic Violence Adviser Team has received over 1400 referrals for high-risk victims of domestic abuse and have provided tailored support for clients.

Speed Watch

Community Safety Board has supported a number residents and community groups to roll out a Speed Watch initiative within their local area to combat speeding vehicles.

Overdose Awareness

Worked with Public Health England to arrange an event to raise profile and increase understanding of Overdoses and Drug-related Deaths with professionals.

Community Safety Strategies

Working with our partners, a number of multi-agency strategies has been produced and implemented (including Hate Crime, Substance Misuse and ASB).

Community Tensions

Implemented a multi-agency Community Tensions Framework to help identify and share intelligence on community tension in a timely and effective manner.

Context

What is the Community Safety Board?

The Community Safety Board is the local multi-agency partnership that has been established to tackle community safety issues within Gateshead. Along with other supporting partner agencies, some of the key organisations that make up the Community Safety Board include:

- Gateshead Metropolitan Borough Council (Community Safety, Youth Offending, Licensing, Trading Standards and Public Health)
- Northumbria Police
- Northumbria Community Rehabilitation Company
- National Probation Service
- Tyne and Wear Fire and Rescue Service
- Newcastle Gateshead Clinical Commissioning Group
- Her Majesty's Court and Tribunal Service
- The Gateshead Housing Company
- Representatives from the Voluntary and Community Sector (Older Peoples Assembly and Children's North East)

By working collectively, these organisations have a greater impact on preventing crime and disorder – and develop more effective and sustainable solutions to better protect, support and empower local residents to feel safe and secure living within Gateshead.

What are the Community Safety Board's duties?

The Board has a statutory obligation under the Crime and Disorder Act 1998 to work in partnership to address issues linked with:

- crime and disorder
- anti-social behaviour
- behaviour adversely affecting the environment
- substance misuse (including both drug and alcohol misuse)
- reducing re-offending

The Community Safety Board meets on a bi-monthly basis and is supported by a range of operational Sub-Groups that deliver the actions identified with this Partnership Plan. These Sub-Groups include:

- Crime, Confidence and ASB Sub-Group
- Domestic Abuse Executive Forum
- Substance Misuse Sub-Group
- Time-limited Task and Finish Groups (including Domestic Homicide Reviews)

The Community Safety Board is required to produce a Partnership Plan every year to inform local residents of the areas that we intend to prioritise over the next twelve-months. The priorities are set following a rigorous intelligence-led assessment of key crime, disorder and substance misuse issues impacting upon the Borough – known as the Strategic Assessment – and involves consultation with local residents.

What is the Strategic Assessment?

The review of the Crime and Disorder Act 1998 changed certain aspects of how crime and disorder is tackled. The legislative changes brought in by the Police and Justice Act 2006 no longer require us to conduct a Crime and Drugs Audit every three years, which in the past has determined the strategic priorities of the Community Safety Board, but instead we are now required to conduct yearly Strategic Assessments, which inform our strategic priorities set out in this Partnership Plan.

A Strategic Assessment is a detailed study of crime and community safety and includes:

- Information from all of the statutory Responsible Authorities;
- Information from wider partners and services;
- Information from Overview and Scrutiny Committee considering crime and disorder matters;
- Information provided by the community (including perceptions surveys);
- Information contained within the previous Strategic Assessment and Partnership Plan, and
- Detailed horizon scanning to inform future and emerging trends.

The ninth Strategic Assessment was completed in December 2015 and the findings have been used to determine the strategic priorities for delivery in 2016/17. This included consultation with local residents and community groups to ensure that the services offered in Gateshead remain responsive to local needs. The consultation was very well received and saw over 200 responses submitted to the Community Safety team over a period of four weeks.

What is the Partnership Plan?

The Partnership Plan is an plan agreed between all partners. It sets out the Borough's priorities and how, in partnership, we plan to meet them and make the best use of resources available to us. This includes both general aims as well as more specific planned action, so we can be flexible to adapt to new legalisation, changing priorities, and good practice in the field of community safety. It also lists the targets by which we will measure our progress.

This Plan brings together partnership working on crime, disorder, substance misuse and reoffending into a single document. Although it is the Community Safety Board who has a statutory responsibility for delivering the actions outlined within this Partnership Plan, we recognise that we must work closely with other strategic partnerships and services to achieve our vision - particularly the Local Safeguarding Children's Board, Safeguarding Adults Board and Health and Wellbeing Board.

National and Regional Landscape

Over the last few years, Government has introduced a number of significant changes to the wider community safety agenda. Some of these include the introduction of directly-elected Police and Crime Commissioners (PCC), reforms as part of the Transforming Rehabilitation agenda as well as a range of national strategies linked with domestic abuse, counter terrorism and crime prevention - all of which impact on the work delivered by community safety partners.

As in previous years, there continues to be a number of organisational changes that the Community Safety Board has had to be aware of in recent months (including the merging of Northumbria Police Area Commands, changes to the operational delivery model of Tyne and Wear Fire and Rescue Service and the split of Probation Services into the Northumbria Community Rehabilitation Company and National Probation Service) in assessing the potential impact on future crime, disorder and re-offending in Gateshead.

Finally, we also are mindful of the work undertaken at a regional perspective by the local Police and Crime Commissioner and neighbouring Community Safety Partnerships, and endeavour, where possible, to discuss how we can work effectively with these partners and services in order to achieve a consistent approach to community safety work.

Strategic Themes & Priorities

To achieve our vision, Gateshead Community Safety Board has identified three strategic themes that it will deliver against for 2016/17:

Theme 1:

Prevent crime, re-offending and ASB
(to reduce demand on services)

The key priorities that will be addressed under this theme are:

- Burglary Dwelling
- Violent Crime
- Criminal Damage
- Anti-Social Behaviour
- Deliberate Secondary Fires
- High Demand Locations in Bensham, Felling, Dunston and Teams

Theme 2:

Protect and support vulnerable victims and persons

The key priorities that will be addressed under this theme are:

- Domestic and Sexual Abuse
- Operation Encompass
- Sexual Exploitation
- Drug-related Deaths
- Prevent Violent Extremism and Radicalisation
- Hate Crime

Theme 3:

Addressing key and emerging threats

The key priorities that will be addressed under this theme are:

- Novel Psychoactive Substances
- Cyber-related Crime
- Community Tensions and Cohesion
- Serious and Organised Crime
- Suicides
- Continued Impact of Welfare Reform

Cross cutting issues

There are also cross-cutting issues that will impact on the these themes including:

- FamiliesGateshead Programme
- Early Intervention and Prevention
- Improving Community Confidence in Services
- Tackling Complex and Multiple Needs
- Substance Misuse (Drugs and Alcohol)

The themes and priorities have been set out graphically in the latter stages of this document.

A full action plan will be produced which sets out the specific actions that will be undertaken under each of the priorities/themes identified above and will highlight what we want to achieve and what we are planning to do to meet those aims. It will also provide details of the performance measures that will be used to quantify our success and enable us to respond to changes in the community safety environment in a timely and effective manner. The Community Safety Board also recognises that some priorities identified have strong links to work overseen by other statutory Boards and will require a co-ordinated approach to ensure that actions are delivered.

Consultation Responses

It is pleasing that in excess of 200 local residents provided feedback on the themes and priorities and we made contact with a wide range of local community and voluntary groups and Council services to seek their views. The consultation process showed that the findings outlined within the Strategic Assessment were similar to the concerns expressed by respondents. However, a greater emphasis was placed on burglary dwelling and theft-related offences as well as youth-related disorder. Environmental issues were also found to be an area of concern for local residents – particularly graffiti, fly-tipping and dog-fouling; while speeding vehicles was also consistently identified.

These areas will be considered as part of the operational Sub-Group work plans for 2016/17 to ensure that the work undertaken by the Board is directly influenced by the findings from the consultation phase. In addition, over the next twelve months, the Board will be in regular contact with residents, businesses and other involved agencies - and is fully committed to regularly informing and consulting about key community safety issues that impact on neighbourhoods.

Performance Monitoring & Governance

The Community Safety Board is responsible for delivering actions to address the strategic themes and priorities identified within this Partnership Plan. Regular reports will be submitted to the Board and will allow partners to challenge and scrutinise the work that has been undertaken.

Overview & Scrutiny Sub-Committee

The actions associated with the Plan will also be formally scrutinised through the Community Safety Overview and Scrutiny Sub-Committee which was established in 2014/15 to ensure that the Board is delivering its necessary functions linked with crime and disorder, as set out in the Local Government Act 2000 and associated regulations.

Community Safety Board - Partnership Plan 2016/17

Vision 2030	"Local People realising their full potential, enjoying the best quality of life in a healthy, equal, safe, prosperous and sustainable Gateshead"					
CSB Vision	"Gateshead to remain a safe place to live, work and visit"					
Landscape	Northumbria Police and Crime Plan – Strategic Priorities	Increased recorded crime in Gateshead (and region)	Ongoing & emerging changes in Community Safety (including Wider Policy Landscape)	Fewer Budgets and Resources Available	Ongoing (and potential future) changes to partner agencies structures/remits	Complex and multiple needs impacting on service demand
Our statutory functions	Crime and Disorder	ASB	Behaviour adversely affecting the environment	Drug Misuse	Alcohol Misuse	Reducing Re-offending
Strategic Themes 2016/17	PREVENT CRIME, RE-OFFENDING AND ASB TO REDUCE DEMAND ON SERVICES		PROTECT AND SUPPORT VULNERABLE VICTIMS AND PERSONS		ADDRESSING KEY AND EMERGING THREATS	
Priorities	<ul style="list-style-type: none">• Burglary Dwelling• Violent Crime• Criminal Damage• Anti-Social Behaviour• Deliberate Secondary Fires• High Demand Locations: (Bensham, Felling, Dunston and Teams)		<ul style="list-style-type: none">• Domestic and Sexual Abuse• Operation Encompass• Sexual Exploitation• Drug-related Deaths• Prevent Violent Extremism and Radicalisation• Hate Crime		<ul style="list-style-type: none">• Novel Psychoactive Substances• Cyber-related Crime• Community Tensions• Community Cohesion• Serious and Organised Crime• Suicides• Continued Impact of Welfare Reform	
Cross Cutting Themes	FamiliesGateshead, Early Intervention and Prevention (All Ages), Improving Community Confidence in Services, Tackling Complex and Multiple Needs Multi-Agency Safeguarding Hub (MASH), Substance Misuse (Drugs and Alcohol)Dual Diagnosis and Mental Health					
Supporting Partnerships	Local Safeguarding Children's Board, Safeguarding Adults Board, Health and Wellbeing Board, Youth Crime Management Board FamiliesGateshead Board, Licensing and Trading Standards, Dual Diagnosis and Mental Health					
Performance Measures	<p>Rate (per 1,000 population): All Crime; Violent Crime, Acquisitive Crime, Total ASB Incidents , Deliberate Secondary Fires.</p> <p>Perceptions: % who feel very or fairly safe living in their area % who think ASB is a big problem in their neighbourhood % who think crime is a big problem in their neighbourhood % who think the Police & Council are dealing with ASB and crime</p> <p>Volume: Successful Outcomes (achieved by Troubled Families Programme)</p>		<p>Rate (per 100,000 population): Alcohol-related Hospital Admissions, Alcohol-related Mortality, Proven Re-offending by Young Offenders, First Time Entrants (FTEs) to Youth Justice System, Custody of Young People.</p> <p>Volume: ARCH Hate Crime Referrals, Number of Drug-related Deaths, Alcohol-related Violent Crime, OCU (Opiate and/or Crack Use), Total MARAC Cases (inc: % Repeats), Total IDVA Referrals, MASH Repeats, Operation Encompass Referrals, % Engaged with Serial Victims Pilot</p>		<p>N/A No performance measures have been set for key and emerging threats section; however relevant data and information will be collected, as appropriate.</p>	

Who to contact to find out more?

Further information can be found on Gateshead Council's website:

www.gateshead.gov.uk/safergateshead

Alternatively, Community Safety can be contacted:

By Letter:

Community Safety Team
Gateshead Council
Civic Centre
Regent Street
Gateshead Council NE8 1HH

By Email (for general enquiries):

community.safety@gateshead.gov.uk

By Telephone:

0191 433 2279

(Office Hours: Monday to Friday, 9-5pm)